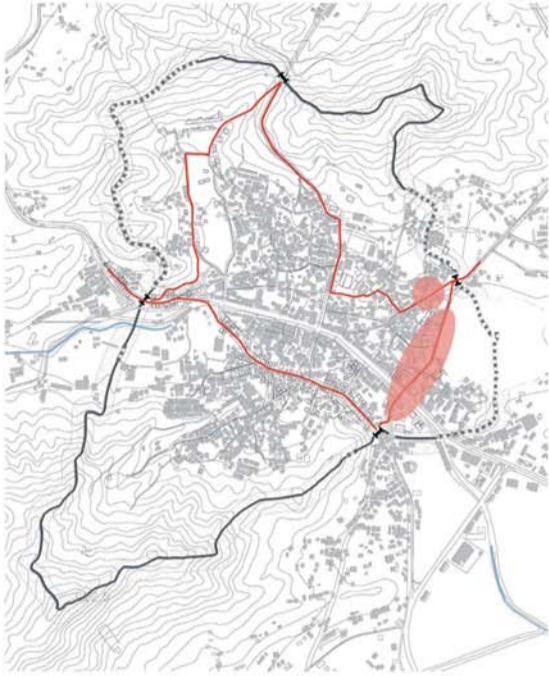


The main idea in this project is connecting the four different gates with the city. Connecting is going to reinforce the link of different districts and gates. Different tourist development programs are proposed in the gates, to avoid disbalance in development.

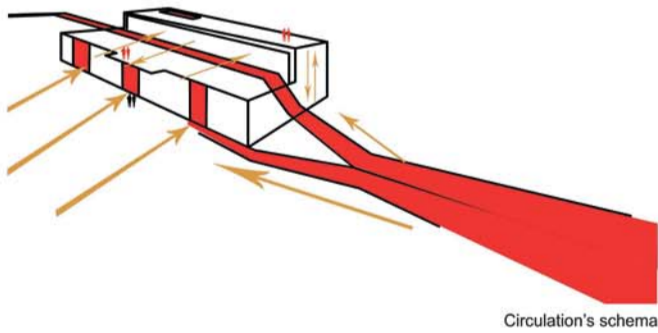
In this way each gate will be transformed into a space of meeting and socialisation



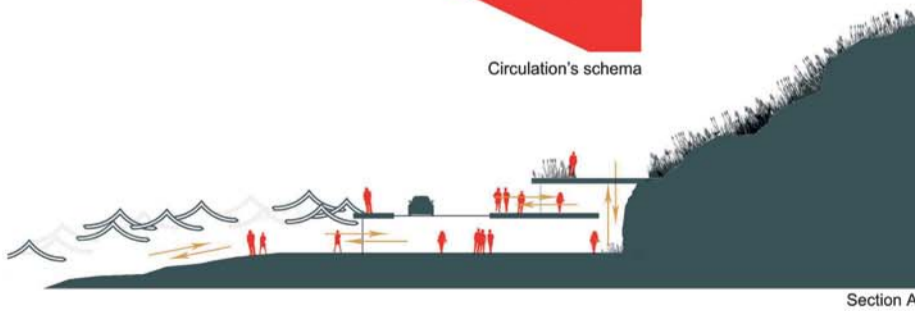
Context around contemporary link



links between south gate and east gate 1:1000



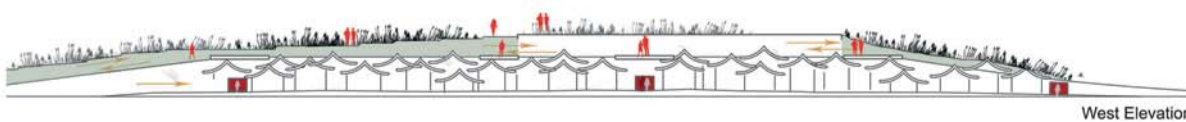
Circulation's schema



Section A



Historical quarter inside east gate 1:1000



West Elevation

This connection should be assured through pedestrian roads, which will allow an interaction with all the historical and natural monuments as well with the natural environment of the city of Ganghwa.